

Centurian - Fixed Bollards

RJ Cox Engineering
info@coxengineering.com.au

Ph: 02) 9486 3006



After

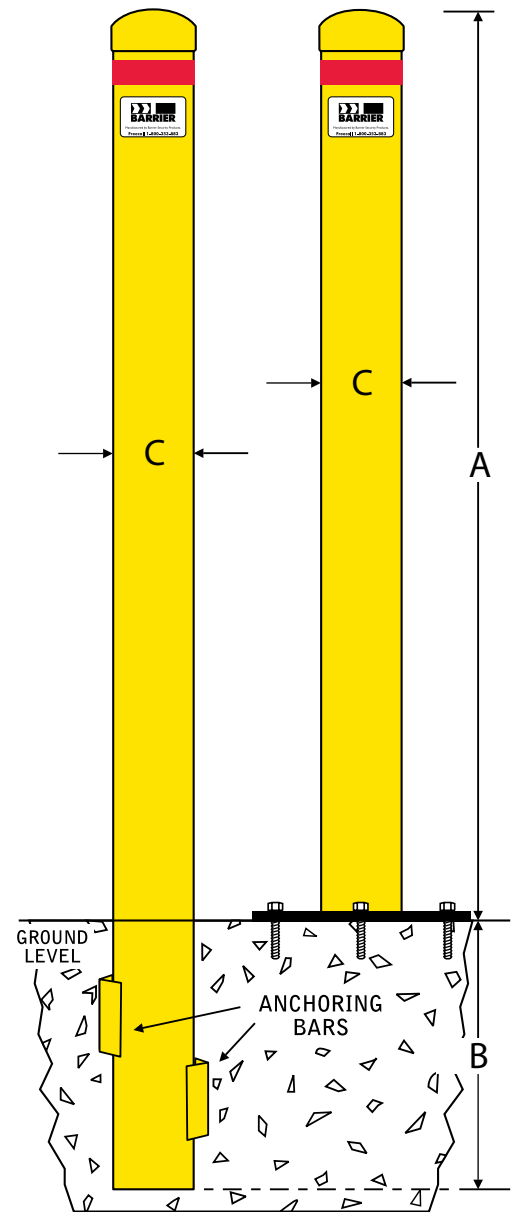


Before

Our **Centurian** range of fixed steel bollards is designed for traffic control and property protection. Manufactured from heavy wall mild steel tube. These bollards are able to take the knocks. Centurian bollards are available in either surface mount or in-ground models, with or without chain rings.

Value Features

- * Wide range of sizes available in both round and square designs.
- * Surface mount models have heavy fully welded base plates.
- * In-ground models are complete with welded concrete starter bars.
- * Models with 'R' suffix have welded chain rings.
- * Reflective band around top of bollard for improved night vision .

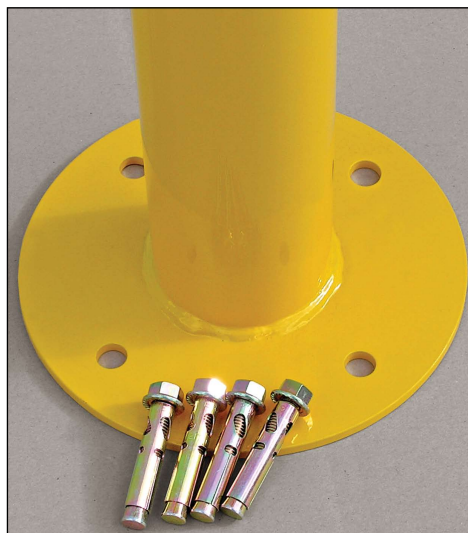


IN-GROUND & SURFACE MOUNT MODELS

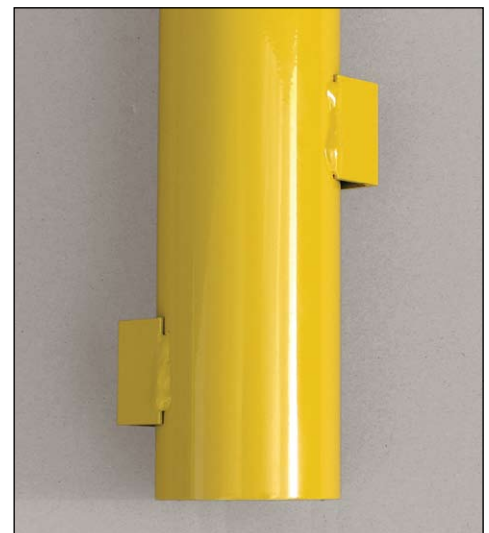
NOTE: Stanard finish is safety yellow powder coat. Other colours on request.



Optional Chain rings



Surface mount models



In-ground models

Centurian - Fixed Bollards

Round Centurian Range

PART No.	A	B	C	Wall Thickness	Weight (kg)	Surface Finish	No. of Fixings	Type of fixing	Base Plate Size	Cap	Chain Ring
	Above ground	Below ground	Post Width								
C63SM	900	-	63.5	1.6	4	P/Coated	3	Sleeve anchors 10 x 50	150 x 6mm	Push-in	-
C63SMR	900	-	63.5	1.6	4	P/Coated	3	Sleeve anchors 10 x 50	150 x 6mm	Push-in	Yes
C63BG	900	300	63.5	1.6	4	P/Coated	-	Concrete footing	Starter bars	Push-in	-
C63BGR	900	300	63.5	1.6	4	P/Coated	-	Concrete footing	Starter bars	Push-in	Yes
C90SM	900	-	90	5.0	9	P/Coated	4	Sleeve anchors 12 x 60	225 x 6mm	Fixed	-
C90SMR	900	-	90	5.0	9	P/Coated	4	Sleeve anchors 12 x 60	225 x 6mm	Fixed	Yes
C90BG	900	380	90	5.0	12	P/Coated	-	Concrete footing	Starter bars	Fixed	-
C90BGR	900	380	90	5.0	12	P/Coated	-	Concrete footing	Starter bars	Fixed	Yes
C140SM	1200	-	140	5.0	23	P/Coated	4	Sleeve anchors 16 x 75	300 x 10mm	Fixed	-
C140BG	1200	500	140	5.0	29	P/Coated	-	Concrete footing	Starter bars	Fixed	-
C165SM	1300	-	165	5.0	34	Galvanised	4	Sleeve anchors 20 x 75	350 x 12mm	Loose	-
C165BG	1300	650	165	5.0	40	Galvanised	-	Concrete footing	Starter bars	Loose	-
C220SM	1300	-	220	6.4	45	Galvanised	4	Sleeve anchors 20 x 75	400 x 12mm	Loose	-
C220BG	1300	650	220	6.4	53	Galvanised	-	Concrete footing	Starter bars	Loose	-

Square Centurian Range

CS90SM	900	-	90 ²	5	12.75	P/Coated	4	Sleeve anchors 12 x 60	200 x 200 x 6mm	Fixed	-
CS90BG	900	400	90 ²	5	16.5	P/Coated	-	Concrete footing	Starter bars	Fixed	-
CS150SM	1200	-	150 ²	5	32	P/Coated	4	Sleeve anchors 16 x 75	300 x 300 x 10mm	Fixed	-
CS150BG	1200	500	150 ²	5	38	P/Coated	-	Concrete footing	Starter bars	Fixed	-

Stainless Steel



Many of the products show cased in this catalogue can also be custom manufactured from stainless steel upon request. Available in standard grade 304 for most architectural and landscape applications, or grade 316 where specified for harsh coastal or contaminated environments. Stainless products are usually polished to a No. 4 finished finish using abrasive belts.

Alternatively for coastal installations, electropolishing is recommended. This is an electrochemical process which simultaneously smooths, levels and brightens the surface of the stainless steel. This process minimises the risk of tea staining and ensures a high quality finish is maintained over many years.