



R J COX ENGINEERING
A Division of E W Cox Pty Ltd
ABN 69 000 098 484

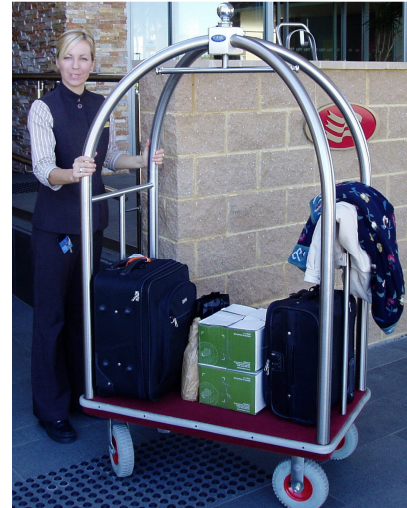
Birdcage Trolley

Cox Birdcage Trolley

- Main cage 50mm dia tube rolled to R700 to form arched top section
- Crossbars at handle height and hanging rail made from 25mm dia tube
- Tube scalloped at joints
- Junction point made from 100mm dia rolled section 100mm high
- Balls on end of hanging rails 38mm dia
- All Cox Birdcage Trolley Frames are all tig welded approx 3mm fillets
- Welds blended and polished
- Dimensions: 64cm Wide, 108cm Long, 188cm High
- 1300mm Extra Long Cox Birdcage Trolley Also Available

Finishes Available: Polished Chrome, Stainless Steel, Solid Brass & Powdercoated.

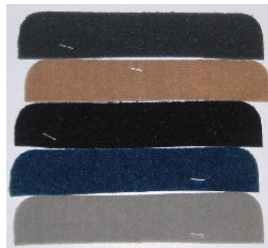
Powdercoated Options: APO Grey, Almond Ivory, Black, White Saturn, Precious Silver Pearl



Modifications Available for Cox Birdcage Trolleys

- 2 Swivel Brake Castors
- Black Pneumatic (Air) Tyres
- Grey Pneumatic (Air) Tyres
- Corner Spinning Wheels
- Rocking Action
- Hammerlock
- Towing Hitch

Carpet Available: Gunmetal Grey, Beige, Black, Midnight Blue, Bastion Grey



Porters Luggage Trolley

- Porters Trolley are fitted with 200mm Grey Rubber Non-Marking Wheels
- Porters Trolley has a 620mm Toe Plate which Folds Up and Away to assist in storage
- Cox Porters Trolley are Fully Tig Welded Tubing
- Back & Deck of Trolley Fully Carpeted

Finishes Available: Chrome Plated, Stainless Steel, Solid Brass & Powdercoated Options: APO Grey, Almond Ivory, Black, White Saturn, Precious Silver Pearl

Carpet Available: Gunmetal Grey, Beige, Black, Midnight Blue, Bastion Grey

Modifications Available for Cox Porters Trolley

- 2 x 260mm dia black pneumatic wheels for rough terrain
- 2 x 260mm dia grey (non marking) pneumatic wheels for rough terrain



We Gladly Accept



Proudly distributed by

RJ Cox Engineering

www.coxengineering.com.au

info@coxengineering.com.au

Ph: 02) 9486 3006

Fax: 02) 9486 3009

Luggage & Luggage Garment Trolleys

Cox Luggage & Luggage Garment Carts

- Fully Tig Welded Tubing
- Light Grey 25mm Non-Marking D-Buffer Around Outside Edge
- Mounted on 2 fixed & 2 swivel 200mm Grey Rubber Non-Marking Castors
- Top and Sides of Deck Carpeted
- Standard Deck Size 1300x640mm

Finishes Available: Chrome Plated, Stainless Steel, Solid Brass & Powdercoated Options: APO Grey, Almond Ivory, Black, White Saturn, Precious Silver Pearl

Carpet Available: Gunmetal Grey, Beige, Black, Midnight Blue, Bastion Grey

Modifications Available for Cox Luggage Garment Carts

- 2 x 100mm dia Swivel Brake Grey Rubber Castors
- 2 fixed & 2 swivel 220mm dia Black Pneumatic (Air) Tyres
- 2 fixed & 2 swivel 220mm dia Grey Pneumatic (Air) Tyres
- 4 x 125mm dia Corner Spinning Wheels (Pictured)
- Rocking Action (2 fixed 200mm grey rubber in centre & 4 swivel 125mm blue rubber castors on corners)
- Hammerlock (Pictured On Luggage & Garment Trolley)
- Towing Hitch

Standard Heights

1800mm Luggage & Garment Trolley
 1200mm Luggage & Garment Trolley



Luggage & Garment Trolley
 Supplied with a Hanging Rail for
 Coats & Dresses



Luggage Trolley

Luggage Racks



Deluxe Wooden Luggage Racks available in Beech or Mahogany, 6 straps and folds away for Easy Storage

Steel Luggage Racks available in Chrome Plated or Black Powdercoated, 4 Straps and folds away for Easy Storage

We Gladly Accept



Proudly distributed by

RJ Cox Engineering

www.coxengineering.com.au
info@coxengineering.com.au

Ph: (02) 9486 3006
 Fax: (02) 9486 3009