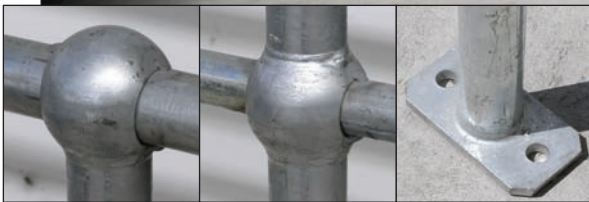


# Ball Fence



**Ball-fence** is a modular handrail system comprising stanchions in a range of configurations, a top rail (or hand rail) and a centre rail (knee rail). Design flexibility is a strength of Ball-fence. Usually the Ball-fence components are assembled on site. If required they can be partially assembled in our factory and delivered to site in sections for simple fixing. (Charges apply)

## Value Features

- \* Design flexibility.
- \* Components are all hot dip galvanised.
- \* Complies to AS1657.
- \* Suitable for outdoor use.
- \* Can be supplied for D.I.Y.

## Specifications

<b>Description:</b>	Tubular handrail system.	
<b>Material:</b>	Post -	48.3 OD (40mm N.B) 3.2mm wall thickness
	Handrail -	42.4mm OD (32mm N.B) medium gauge tube
	Kneerail -	33.7mm OD (25mm N.B) medium gauge tube
<b>Finish:</b>	Hot dip galvanised	
<b>Height:</b>	Ground to centre of handrail 1017mm Ground to centre of Kneerail 560mm	
<b>Spacing:</b>	Max post spacing 2 metres centre to centre	

PART No.	DESCRIPTION
BFHR	Hand rail 32 N.B. x 6.5 metres
BFKR	Knee rail 25 N.B. x 6.5 metres
BFEP-SM	End Post (Surface mount)
BFEP-BG	End Post (Cored)
BFTP-SM	Through Post (Surface mount)
BFTP-BG	Through Post (Cored)
BFCP-SM	Corner Post (Surface mount)
BFCP-BG	Corner Post (Cored)
BFB32	Bend 90° x 32 N.B.
BFB25	Bend 90° x 25 N.B.
BFCB	Closure Bend
BFSJ32	Slip Joint 32 N.B.
BFSJ25	Slip Joint 25 N.B.
BFTP	Taper Pin

