

Bulk Bins

Featuring a tough, one-piece polyethylene body and housed in a hot-dipped galvanised steel frame, Superior Pak Bulk Bins greatly reduce the need for packaging and handling, saving you time and money. Efficient and cost-effective solution for storing and handling a wide range of produce such as granules, powders, pasta products, confectionary, milk, vegetable oils, fluids, fertilisers, pharmaceuticals and more. Superior Pak Bulk Bins are fully sealed and weatherproof.

Code	Description	Application	Capacity (L)	Cone Angle (°)	Length (mm)	Width (mm)	Height (mm)
E0779	500 L Bulk Bin	Dry	500	30/42	1720	1720	1310
E0383	1000 L Bulk Bin	Dry/Liquid	1000	40	1170	1170	1675
E0569	1000 L Bulk Bin	Dry/Liquid	1000	60	1170	1170	1815
E0341	1500 L Bulk Bin	Dry/Liquid	1500	40	1170	1170	2035
E0435	1500 L Bulk Bin	Dry/Liquid	1500	60	1170	1170	2280
E0323	2000 L Bulk Bin	Dry/Liquid	2000	40	1170	1170	2470
E0552	2000 L Bulk Bin	Dry/Liquid	2000	60	1170	1170	2850
E0666	2300 L Bulk Bin	Dry/Liquid	2300	40	1170	1170	2880
E0420	2300 L Bulk Bin	Dry/Liquid	2300	60	1170	1170	2820
E0421	2800 L Bulk Bin	Dry/Liquid	2800	60	1170	1170	3250
E0967	2800 L Bulk Bin	Dry/Liquid	2800	40	1170	1170	3250



E0779 500 litre Bulk Bin



E0383 1000 litre Bulk Bin



E0569 1000 litre Bulk Bin



E0341 1500 litre Bulk Bin



Bulk Bins

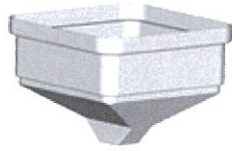
There is an extensive range of volume, lid, frame, cone angle and outlet options to build the Bulk Bin to meet your storage and materials handling requirements. Superior Pak Bulk Bins are designed to suit dry and liquid storage in a variety of applications; they can be colour coded, dual skin coloured (black external or white internal) or you may choose from a range of stock colours.

Select Bottle Capacity/Volume

Code	Description	Application	Capacity (L)	Cone Angle (°)
E0450	Hopper Bulk Bin	Dry/Liquid	300	30
E0779	Hopper Bulk Bin	Dry/Liquid	500	30
E0640	Hopper Bulk Bin	Dry/Liquid	800	30
E0383	Bulk Bin Clamp	Dry/Liquid	1000	40
E0341	Clamp Bulk Bin	Dry/Liquid	1500	40
E0342	Clamp Bulk Bin	Dry/Liquid	1800	40
E0323	Clamp Bulk Bin	Dry/Liquid	2000	40
E0666	Clamp Bulk Bin	Dry/Liquid	2300	40
E0967	Clamp Bulk Bin	Dry/Liquid	2800	40
E0569	Clamp Bulk Bin	Dry/Liquid	1000	60
E0435	Clamp Bulk Bin	Dry/Liquid	1500	60
E0409	Clamp Bulk Bin	Dry/Liquid	2000	60
E0420	Clamp Bulk Bin	Dry/Liquid	2300	60
E0421	Clamp Bulk Bin	Dry/Liquid	2800	60
E0657	Fully Open Top	Dry/Liquid	1000	40
E0732	Fully Open Top	Dry/Liquid	1500	40
E0761	Fully Open Top	Dry/Liquid	2000	40
E0940	Fully Open Top	Dry/Liquid	2300	40
E0966	Fully Open Top	Dry/Liquid	2800	40
E0676	Fully Open Top	Dry/Liquid	1000	60
E0624	Fully Open Top	Dry/Liquid	1500	60
E0552	Fully Open Top	Dry/Liquid	2000	60
E0871	Fully Open Top	Dry/Liquid	2300	60
E0661	Fully Open Top	Dry/Liquid	2800	60
E0818	Semi Open Lid	Dry/Liquid	1000	40
E0644	Semi Open Lid	Dry/Liquid	1500	40
E0778	Semi Open Lid	Dry/Liquid	1000	60
E0878	Semi Open Lid	Dry/Liquid	1500	60



E0450 Hopper Bulk Bin



E0779 Hopper Bulk Bin



E0640 Hopper Bulk Bin



E0383 Clamp Bulk Bin



E0341 Clamp Bulk Bin



E0342 Clamp Bulk Bin



E0323 Clamp Bulk Bin



E0666 Clamp Bulk Bin



E0967 Clamp Bulk Bin



E0569 Clamp Bulk Bin



E0435 Clamp Bulk Bin



E0409 Clamp Bulk Bin



E0420 Clamp Bulk Bin



E0421 Clamp Bulk Bin



E0657 Fully Open Top



E0732 Fully Open Top



E0761 Fully Open Top



E0940 Fully Open Top



E0966 Fully Open Top



E0676 Fully Open Top



E0624 Fully Open Top



E0552 Fully Open Top



E0871 Fully Open Top



E0661 Fully Open Top



E0818 Semi Open Lid



E0644 Semi Open Lid



E0778 Semi Open Lid



E0878 Semi Open Lid

PROUDLY DISTRIBUTED BY

R.J. Cox Engineering --- (02) 9486-3006

www.coxengineering.com.au --- info@coxengineering.com.au

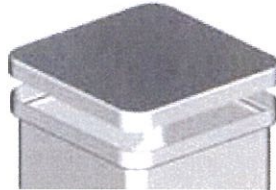


Lid Configuration

Choose the right lid for the job; three functional options are available: 450 mm clamp lid, the fully open lid or the 900 mm semi open lid.



450 mm Clamp



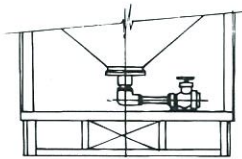
Fully Open Top



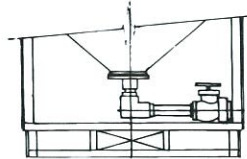
Semi Open Lid

Outlet Configuration

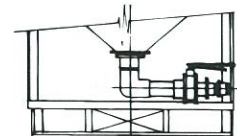
Two version of outlet systems are available for either dry or liquid storage. The dry valve systems feature a slide valve (200 mm mucon – iris valve) for powders and granules. For liquid applications, a horizontal or vertical valve system is used which range in size from 25 mm up to 150 mm.



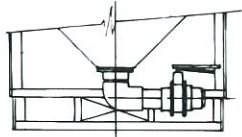
20 mm Ball Valve



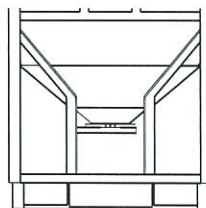
50 mm Ball Valve



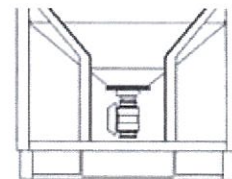
75 mm Butterfly Valve



100 mm Butterfly Valve



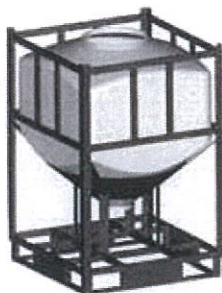
200 mm P.E. Side Valve



50 mm Vertical Valve

Frame Options

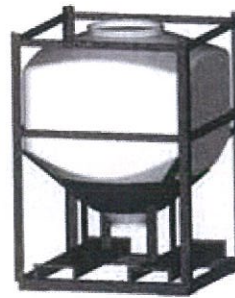
Frames can be built for easy stackability or with extended legs to elevate the outlet position above a bin, hopper or conveyor system. To further enhance strength and durability, Bulk Bin frames can be hot dip galvanised or painted as required, and can provide a range of flexible options for transportation requirements. Each bin can also be customised to your own specific requirements.



Spillage Base



Lightweight Base



Slipper Base



Castor Base