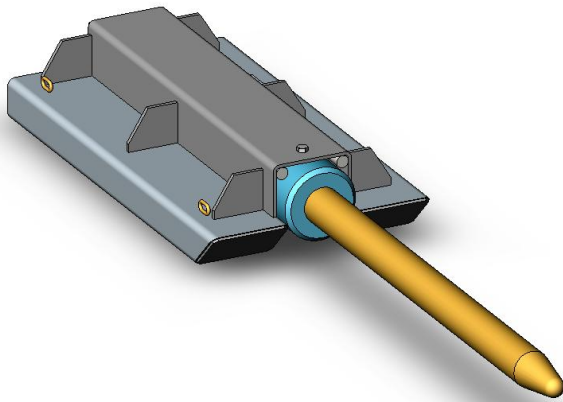


## Type RPS3N Slip-On Roll Prong

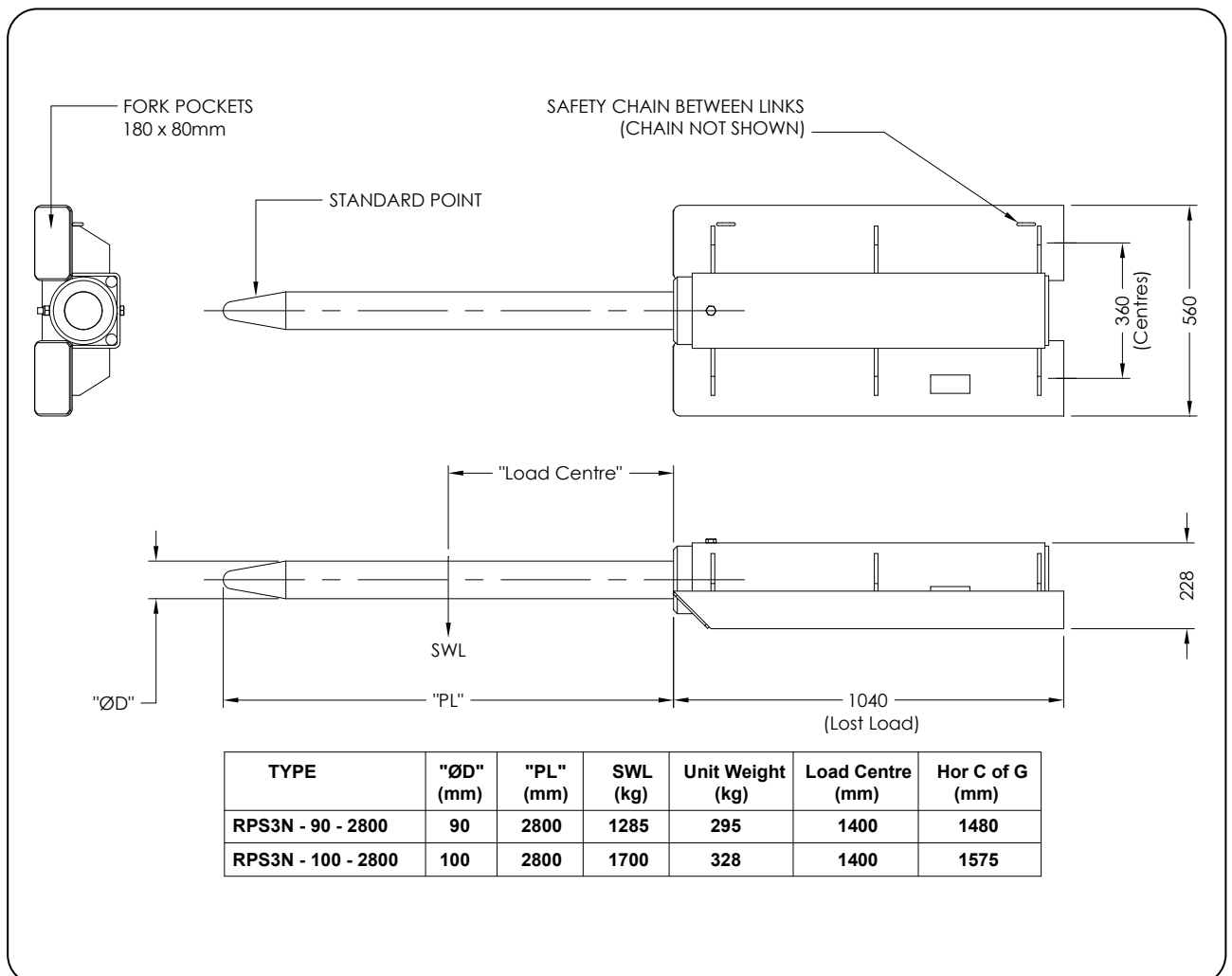
The type RPS3N Slip-On Roll Prong is suitable for fabric, cable and coil products. Although this Roll Prong can be used for carpet handling, usage is generally restricted to larger Forklifts due to the extended load centre created by the length of the tines. These attachments quickly adapt to almost any Forklift requiring only the connection of the Safety Chain to prevent unintentional disengagement. Prongs are manufactured from high tensile steel and can be made to any length. The Safe Working Load (SWL) of this unit varies depending on Prong chosen.



(RPS3N with Ø90mm Prong shown)

### SPECIFICATIONS:

- Safe Working Load (SWL) – refer chart below
- Lost Load 1040mm
- Unit Weight – refer chart below
- Standard finish – painted enamel
- Refer diagram below for all other specifications



We Gladly Accept



*Proudly distributed by*

**RJ Cox Engineering**

[www.coxengineering.com.au](http://www.coxengineering.com.au)  
[info@coxengineering.com.au](mailto:info@coxengineering.com.au)

1 1

Ph: 02) 9486 3006  
 Fax: 02) 9486 3009