

# STORAGE BOXES



M-AP4000

## File 'n' Store

MAT: Polypropylene  
 EXT: 450 x 300 x 268mm  
 INT: 370 x 230 x 260mm  
 WT: 1.1kg CAP: 20L  
 COL: Blue, Grey  
 ACC: -  
 PK: 4 PLT: 64



M-AP4100

## Filemaster

MAT: Polypropylene  
 EXT: 450 x 300 x 275mm  
 INT: 370 x 230 x 260mm  
 WT: 1.2kg CAP: 20L  
 COL: Blue, Grey  
 ACC: -  
 PK: 4 PLT: 64



M-AP1003

## Toolbox with Removable Tray

MAT: Polypropylene  
 EXT: 430 x 190 x 90mm  
 INT: 415 x 170 x 85mm  
 WT: 1.3kg CAP: -  
 COL: Red, Black  
 ACC: -  
 PK: 6 PLT: 96



M-NB001

## 1kg Utility Box

MAT: Polypropylene  
 EXT: 138 x 112 x 65mm  
 INT: 114 x 90 x 50mm  
 WT: 0.09kg CAP: 1kg  
 COL: Blue, Red  
 ACC: -  
 PK: 50 PLT: -



M-NB002

## 2kg Utility Box

MAT: Polypropylene  
 EXT: 225 x 138 x 65mm  
 INT: 200 x 115 x 50mm  
 WT: 0.1kg CAP: 2kg  
 COL: Blue, Red  
 ACC: -  
 PK: 25 PLT: -



M-NB005

## 5kg Utility Box

MAT: Polypropylene  
 EXT: 225 x 138 x 128mm  
 INT: 200 x 115 x 114mm  
 WT: 0.2kg CAP: 5kg  
 COL: Blue, Red  
 ACC: -  
 PK: 10 PLT: -

We Gladly Accept



*Proudly distributed by*

**RJ Cox Engineering**

[www.coxengineering.com.au](http://www.coxengineering.com.au)  
[info@coxengineering.com.au](mailto:info@coxengineering.com.au)

Ph: 02) 9486 3006  
 Fax: 02) 9486 3009

# STORAGE TRAYS



**M-VSTD4001BL**  
**Small 400 Series Tray**  
*\* 4 dividers included*

MAT: Polypropylene  
 EXT: 400 x 146 x 50mm  
 INT: 370 x 130 x 45mm  
 WT: 0.2kg CAP: -  
 COL: Blue  
 ACC: M-VCD001 Divider (x4)  
 PK: 18 PLT: 576



**M-VSTD4002BL**  
**Medium 400 Series Tray**  
*\*2 dividers included*

MAT: Polypropylene  
 EXT: 400 x 146 x 100mm  
 INT: 370 x 130 x 97mm  
 WT: 0.4kg CAP: -  
 COL: Blue  
 ACC: M-VSD002 Divider (x2)  
 PK: 8 PLT: 256



**M-VSTD4003BL**  
**Large 400 Series Tray**  
*\*2 dividers included*

MAT: Polypropylene  
 EXT: 400 x 296 x 140mm  
 INT: 370 x 277 x 138mm  
 WT: 0.8kg CAP: -  
 COL: Blue  
 ACC: M-VCD003 Divider (x2)  
 PK: 3 PLT: 96

*\*Now with centre divider option*



**M-VCT001**  
**Small 600 Series Tray**  
*\*Dividers sold separately*

MAT: Polypropylene  
 EXT: 600 x 148 x 50mm  
 INT: 590 x 130 x 45mm  
 WT: 0.4kg CAP: -  
 COL: Grey  
 ACC: M-VCD001 Divider  
 PK: 30 PLT: 360



**M-VCT002**  
**Medium 600 Series Tray**  
*\*Dividers sold separately*

MAT: Polypropylene  
 EXT: 600 x 148 x 100mm  
 INT: 590 x 130 x 95mm  
 WT: 0.6kg CAP: -  
 COL: Grey  
 ACC: M-VSD002 Divider  
 PK: 15 PLT: 180



**M-VCT003**  
**Large 600 Series Tray**  
*\*Dividers sold separately*

MAT: Polypropylene  
 EXT: 600 x 298 x 140mm  
 INT: 590 x 278 x 135mm  
 WT: 1.1kg CAP: -  
 COL: Grey  
 ACC: M-VCD003 Divider  
 PK: 4 PLT: 96

*Proudly distributed by*

**RJ Cox Engineering**

[www.coxengineering.com.au](http://www.coxengineering.com.au)  
[info@coxengineering.com.au](mailto:info@coxengineering.com.au)

Ph: (02) 9486 3006  
 Fax: (02) 9486 3009

We Gladly Accept





M-TB001

### Small Tote Box

MAT: Polypropylene  
 EXT: 432 x 320 x 127mm  
 INT: 375 x 280 x 122mm  
 WT: 0.6kg      CAP: 13L  
 COL: Beige, Blue, Burgundy,  
 Sage Green, White, Green  
 ACC: M-TL001 Lid  
 PK: 10      PLT: 160

M-TB002

### Medium Tote Box

MAT: Polypropylene  
 EXT: 432 x 320 x 210mm  
 INT: 375 x 280 x 200mm  
 WT: 0.8kg      CAP: 21L  
 COL: White, Blue, Gold  
 ACC: M-TL001 Lid  
 PK: 5      PLT: 80

M-TB003

### Large Tote Box

MAT: Polypropylene  
 EXT: 432 x 320 x 307mm  
 INT: 375 x 280 x 300mm  
 WT: 1.3kg      CAP: 33L  
 COL: White  
 ACC: M-TL001 Lid  
 PK: 3      PLT: 48



M-TL001

### Tote Box Lid

MAT: Polypropylene  
 EXT: 440 x 330 x 18mm  
 INT: -  
 WT: 0.3kg      CAP: -  
 COL: White  
 ACC: -  
 PK: 30      PLT: 720



We Gladly Accept



*Proudly distributed by*

**RJ Cox Engineering**

[www.coxengineering.com.au](http://www.coxengineering.com.au)  
[info@coxengineering.com.au](mailto:info@coxengineering.com.au)

Ph: 02) 9486 3006  
 Fax: 02) 9486 3009

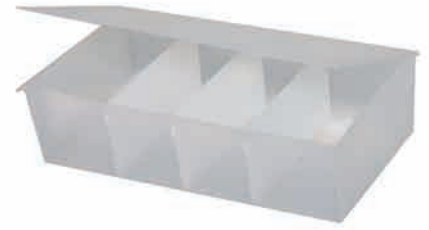
# STACKING CRATES & UTILITIES



MESH



SOLID



M-DB001GD

**Dip Bin (mesh base)**

MAT: HDPE  
 EXT: 380 x 300 x 193mm  
 INT: 335 x 256 x 183mm  
 WT: 0.9kg      CAP: 16L  
 COL: Gold  
 ACC: -  
 PK: 5      PLT: 80

M-DB002GD

**Dip Bin (solid base)**

MAT: HDPE  
 EXT: 381 x 300 x 200mm  
 INT: 335 x 256 x 183mm  
 WT: 0.9kg      CAP: 16L  
 COL: Gold  
 ACC: -  
 PK: 5      PLT: 80

M-BB001

**Bitza Box**

MAT: Polypropylene  
 EXT: 460 x 244 x 118mm  
 INT: 425 x 215 x 110mm  
 WT: 0.7kg      CAP: 10L  
 COL: Clear  
 ACC: Dividers Included  
 PK: 5      PLT: 120



M-HB001

**Hobby Box**

MAT: Polypropylene  
 EXT: 360 x 360 x 290mm  
 INT: 330 x 330 x 278mm  
 WT: 1.2kg      CAP: 31L  
 COL: Blue, Green, Red, Yellow  
 ACC: -  
 PK: 1      PLT: 54



M-MC001

**Milk Crate**

MAT: Polypropylene  
 EXT: 346 x 346 x 316mm  
 INT: 310 x 310 x 295mm  
 WT: 1.3kg      CAP: 27L  
 COL: Red, Yellow  
 ACC: -  
 PK: 1      PLT: 63



M-PP001

**Pie & Pastry Utility Tray**

MAT: Polypropylene  
 EXT: 660 x 580 x 124mm  
 INT: 630 x 550 x 107mm  
 WT: 1.2kg      CAP: 34L  
 COL: Red, Purple, Blue  
 ACC: -  
 PK: 5      PLT: 120

We Gladly Accept



*Proudly distributed by*

**RJ Cox Engineering**

[www.coxengineering.com.au](http://www.coxengineering.com.au)  
[info@coxengineering.com.au](mailto:info@coxengineering.com.au)

Ph: 02) 9486 3006  
 Fax: 02) 9486 3009

# LUG BOX

- The Original & The Best
- Dimensionally Stable
- Ventilated
- Withstands Freezer Conditions
- Recyclable
- Made From High Density
- Polyethylene
- Impact Resistant
- UV Stabilised
- Available in 6 Colours



M-LB001

## Lug Box

MAT: HDPE

EXT: 610 x 425 x 320mm

INT: 565 x 380 x 312mm

WT: 2.5kg      CAP: 66L

COL: Blue, Yellow, Green,  
Orange, Black, Red

ACC: -

PK: 3      PLT: 54

\*Colours are a guide only and may not represent the actual colour of the product.



# STACKING & NESTING CRATES



M-SN170

## Mini Stack & Nest

MAT: Polypropylene  
 EXT: 570 x 305 x 175mm  
 INT: 550 x 200 x 175mm  
 WT: 1kg      CAP: 20L  
 COL: Blue, Red  
 ACC: -  
 PK: 3      PLT: 152



M-SN200

## Small Stack & Nest

MAT: HDPE/Polypropylene  
 EXT: 655 x 413 x 210mm  
 INT: 490 x 310 x 200mm  
 WT: 1.7kg      CAP: 32L  
 COL: Blue, Natural, Red  
 ACC: M-SNCL001 (Lid)  
 PK: 6      PLT: 96



M-SN275

## Medium Stack & Nest

MAT: HDPE/Polypropylene  
 EXT: 655 x 413 x 275mm  
 INT: 485 x 320 x 270mm  
 WT: 2.1kg      CAP: 46L  
 COL: Blue, Natural, Red  
 ACC: M-SNCL001 (Lid)  
 PK: 6      PLT: 96

\* Custom colours available on request subject to minimum order quantities.



M-SN001

## Large Stack & Nest

MAT: HDPE  
 EXT: 698 x 406 x 305mm  
 INT: 590 x 295 x 298mm  
 WT: 2.4kg      CAP: 70L  
 COL: Blue  
 ACC: -  
 PK: 5      PLT: 60



M-SNCL001

## Lid for Stack & Nest

MAT: HDPE  
 EXT: 660 x 425 x 35mm  
 INT: -  
 WT: 0.8kg      CAP: -  
 COL: Natural, Black  
 ACC: -  
 PK: 6      PLT: 144



## Hot Stamping

Icon Plastics can hot stamp crates or boxes with your chosen colours. Crates can be hot stamped in various positions and on a number of sides per crate.

Standard 10mm lettering is now available.

Your company logo and artwork can be produced at an additional cost.

We Gladly Accept



*Proudly distributed by*

**RJ Cox Engineering**

[www.coxengineering.com.au](http://www.coxengineering.com.au)  
[info@coxengineering.com.au](mailto:info@coxengineering.com.au)

Ph: 02) 9486 3006  
 Fax: 02) 9486 3009

# PRODUCE CRATES



M-PC022

## Small Produce Crate

MAT: Polypropylene  
EXT: 505 x 330 x 240mm  
INT: 430 x 260 x 225mm  
WT: 2kg CAP: 22L  
COL: Green, Orange  
ACC: -  
PK: 5 PLT: 120

M-PC036

## Medium Produce Crate

MAT: Polypropylene  
EXT: 505 x 330 x 345mm  
INT: 430 x 260 x 330mm  
WT: 2.6kg CAP: 36L  
COL: Green, Orange  
ACC: -  
PK: 4 PLT: 128

M-PC072

## Large Produce Crate

MAT: Polypropylene  
EXT: 655 x 495 x 345mm  
INT: 520 x 375 x 325mm  
WT: 3.8kg CAP: 72L  
COL: Green  
ACC: -  
PK: 5 PLT: 60



M-ST001

## Produce Tray

MAT: Polypropylene  
EXT: 585 x 378 x 136mm  
INT: 515 x 305 x 125mm  
WT: 0.7kg CAP: -  
COL: Green, Red  
ACC: -  
PK: 5 PLT: 90



## Medium Produce Crate

*Proudly distributed by*

**RJ Cox Engineering**

[www.coxengineering.com.au](http://www.coxengineering.com.au)  
[info@coxengineering.com.au](mailto:info@coxengineering.com.au)

Ph: 02) 9486 3006  
Fax: 02) 9486 3009

We Gladly Accept



# NESTING TOTES



M-LP035

## 9L Nesting Tote

MAT: Polypropylene  
 EXT: 365 x 310 x 120mm  
 INT: 327 x 268 x 105mm  
 WT: 0.3kg CAP: 9L  
 COL: Red, Yellow, Blue  
 ACC: -  
 PK: 5 PLT: 270



M-LP034

## 18L Nesting Tote

MAT: Polypropylene  
 EXT: 445 x 352 x 180mm  
 INT: 390 x 290 x 175mm  
 WT: 0.6kg CAP: 18L  
 COL: Red, Yellow, Blue  
 ACC: -  
 PK: 5 PLT: 240



M-TN120

## 13L Nesting Tote

MAT: Polypropylene  
 EXT: 430 x 323 x 127mm  
 INT: 390 x 285 x 125mm  
 WT: 0.6kg CAP: 13L  
 COL: Natural  
 ACC: -  
 PK: 5 PLT: 300



M-TN225

## 22L Nesting Tote

MAT: Polypropylene  
 EXT: 525 x 380 x 140mm  
 INT: 455 x 305 x 135mm  
 WT: 0.8kg CAP: 22L  
 COL: Natural, Orange  
 ACC: -  
 PK: 6 PLT: 360



M-TN001

## 41L Nesting Tote

MAT: Polypropylene  
 EXT: 605 x 390 x 235mm  
 INT: 520 x 305 x 225mm  
 WT: 1.6kg CAP: 41L  
 COL: Blue, Black  
 ACC: -  
 PK: 5 PLT: 96



M-LP030

## 27L Round Nesting Tub

MAT: Polypropylene  
 EXT: 495 x 495 x 235mm  
 INT: 420 x 420 x 225mm  
 WT: 0.8kg CAP: 27L  
 COL: Red, Yellow, Blue  
 ACC: -  
 PK: 5 PLT: 150

We Gladly Accept



*Proudly distributed by*

**RJ Cox Engineering**

[www.coxengineering.com.au](http://www.coxengineering.com.au)  
[info@coxengineering.com.au](mailto:info@coxengineering.com.au)

Ph: 02) 9486 3006  
 Fax: 02) 9486 3009



HW003235

### 35 Litre Slide Top Tidy

MAT: Top: Styrene  
 MAT: Bottom: HDPE  
 WT: 0.4kg CAP: 35L  
 COL: White, Charcoal  
 PK: 4 PLT: 96



HW002218

### 50 Litre Swing Top Tidy

MAT: Top: Styrene  
 MAT: Bottom: HDPE  
 WT: 1.3kg CAP: 50L  
 COL: White  
 PK: 2 PLT: 16



HW002590

### 59 Litre Push Top Tidy

MAT: Lid: Styrene  
 MAT: Bottom: HDPE  
 WT: 1.2kg CAP: 59L  
 COL: White, Charcoal, Blue  
 PK: 4 PLT: 36



HW001500

### 15 Litre Flip Top Tidy

MAT: HDPE  
 WT: 0.6kg CAP: 15L  
 COL: White  
 ACC: -  
 PK: 4 PLT: 72



HW001200

### 12 Litre Waste Paper Bin

MAT:  
 WT: 0.4kg CAP: 12L  
 COL: Beige, Black, Grey  
 ACC: -  
 PK: 10 PLT: 320



HW003659

### Super Bucket

MAT: HDPE  
 WT: 0.7kg CAP: 20L  
 COL: Black, White  
 ACC:  
 PK: 10 PLT: 180

We Gladly Accept



*Proudly distributed by*

**RJ Cox Engineering**

[www.coxengineering.com.au](http://www.coxengineering.com.au)  
[info@coxengineering.com.au](mailto:info@coxengineering.com.au)

Ph: 02) 9486 3006  
 Fax: 02) 9486 3009

# RECYCLING CRATES & SEAT SHELLS



M-SN200

## Small Stack & Nest

MAT: HDPE/Polypropylene  
 EXT: 655 x 413 x 210mm  
 INT: 490 x 310 x 200mm  
 WT: 1.7kg CAP: 32L  
 COL: Black  
 ACC: M-SNCL001  
 PK: 6 PLT: 96



M-SN275

## Medium Stack & Nest

MAT: HDPE (Recycled)  
 EXT: 655 x 413 x 275mm  
 INT: 485 x 320 x 270mm  
 WT: 2.1kg CAP: 46L  
 COL: Black  
 ACC: M-SNCL001  
 PK: 6 PLT: 96



M-TN001

## 41L Nesting Tote

MAT: Polypropylene (Recycled)  
 EXT: 605 x 390 x 235mm  
 INT: 520 x 305 x 225mm  
 WT: 1.6kg CAP: 41L  
 COL: Black  
 ACC: -  
 PK: 5 PLT: 96



M-SSL001

## Large Seat Shells

MAT: Polypropylene  
 EXT: 360 x 370 x 460mm  
 INT: -  
 WT: 1.1kg CAP: -  
 COL: Burgundy, Slate Blue, Sage Green, Beige  
 ACC: -  
 PK: 6 PLT: 72



M-SSS001

## Small Seat Shells

MAT: Polypropylene  
 EXT: 315 x 300 x 385mm  
 INT: -  
 WT: 0.7kg CAP: -  
 COL: Burgundy, Slate Blue, Sage Green, Beige  
 ACC: -  
 PK: 8 PLT: 96

## PLASTIC SEAT SHELLS

### UV RESISTANT IF REQUIRED

Special ultra violet stabilisers can be added for outdoor applications.

### RUGGED CONSTRUCTION IN TOUGH POLYPROPYLENE

Designed and made to withstand the toughest conditions.

### CORPORATE IDENTIFICATION

Company logo's can be incorporated into the moulded seat.

We Gladly Accept



*Proudly distributed by*

**RJ Cox Engineering**

[www.coxengineering.com.au](http://www.coxengineering.com.au)  
[info@coxengineering.com.au](mailto:info@coxengineering.com.au)

Ph: (02) 9486 3006  
 Fax: (02) 9486 3009