



Load Capacities up to 400kg

- Pressed metal construction in Grade 304 stainless
- Swivel, fixed and bolt hole castors are available to suit wheel diameters from 75mm to 150mm
- Expanding pintles are available for bolt hole castors
- Total lock brakes (suffix L) and directional Lock (suffix K) available on most Institutional swivel castors.
- Large selection of wheels to suit various operating environments
- 12 month warranty

Users include: Hospitals, Laboratories, Laundries, Processing Plants and Caterers

Where hygiene is critical or if prolonged contact with corrosive conditions is anticipated, Lemcol offers a range of fully stainless steel castors utilising our Medium Industrial and Institutional design.

Frames

All frames are manufactured of pressed metal construction in Grade 304 stainless steel.

The Medium Industrial frame utilises an exclusive large diameter ballrace, spreading the load equally around the entire top plate and preventing lateral loading of the kingpin. This results in castors of superior strength and durability.

The Institutional frame is available in swivel, fixed and bolthole varieties. For bolthole frames, expanding pintles are available to suit inside tube diameters from 18.5 to 30.0mm.

This range includes total brakes and two-way directional locks (all models except 75mm). Directional locks are used to enable the trolley to be used in fixed or swivel mode according to whether greater manoeuvrability or stable, straight tracking is needed.

Wheels

Apart from standard white nylon, the Medium Industrial range offers two phenolic wheels for high temperature applications (170 degrees and 300 degrees C). When these wheels are selected, a grease nipple is fitted into the ballrace and the grease is changed to suit the application.

The Institutional range offers grey rubber, white nylon and polyurethane on polymer wheels in diameters from 75mm to 150mm. To prevent linen thread from being trapped around the wheel axles, thread guards are fitted as standard on all models except nylon.

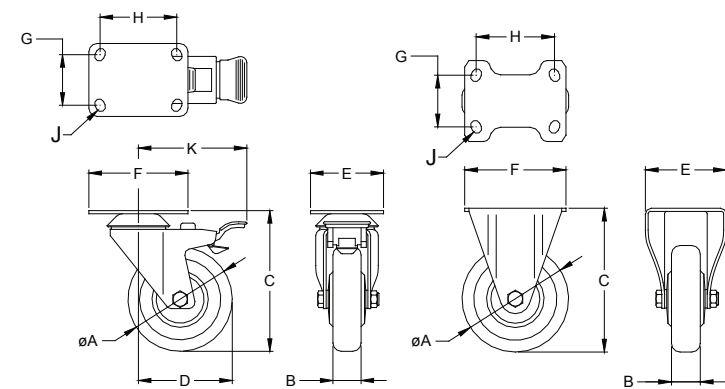
12 Month Warranty

This range carries our standard 12 month warranty against faulty workmanship and materials, and is backed by a service and parts network Australia wide.



stainless steel CASTORS

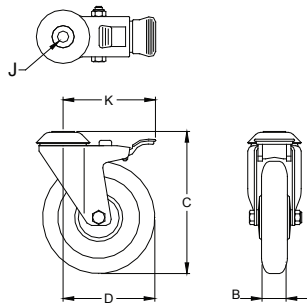
TECHNICAL SPECIFICATIONS



Top Plate Sizes and Bolt Hole Dimensions

All dimensions in millimetres

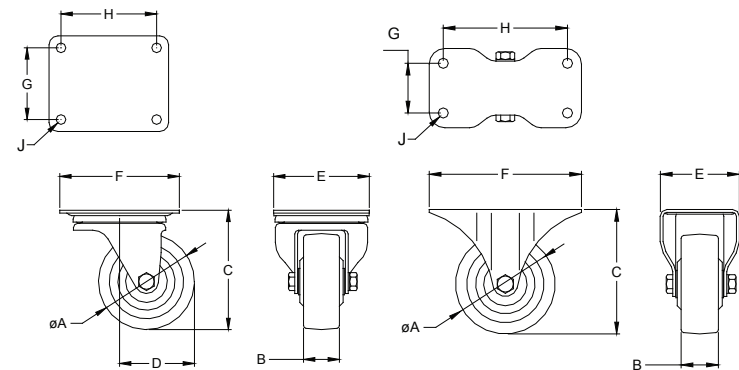
Plate Code	E x F	G x H	J
P	70 x 95	45/52 x 72/75	8



Expanding Pintles

Round	Square	Size Range
SR1	SS1	18.5-21.0
SR2	SS2	21.5-24.0
SR3	SS3	27.5 - 30.0

Note: When ordering castors with pintle, add the suffix to the model number - i.e. L66723552



Top Plate Sizes and Bolt Hole Dimensions

All dimensions in millimetres

Plate Code	Swivel	Rigid	J		
Code	E x F	G x H	E x F	G x H	J
K	80 x 102	60 x 80	63 x 127	30 x 102	8
L	102 x 127	76 x 102	80 x 156	51 x 127	10
M	152 x 165	105 x 140	95 x 156	63 x 127	10

INSTITUTIONAL RANGE WHEEL SPECIFICATIONS

INSTITUTIONAL RANGE WHEEL SPECIFICATIONS						CASTOR SPECIFICATIONS							
Dia 'A'	Width 'B'	Wheel Type	Wheel Model No	Bearing	Capacity	Height 'C'	Swivel Model No.	Rigid Model No.	Swept Radius 'D'	'K'	Plate Code	Product Code Swivel	Rigid
75	30	Grey Rubber	L63120S	Ball	55	107	L63121S	L63122S	85	105	P	00677161	00717009
75	30	White Nylon	L63000W	Plain	80	107	L63001S	L63002S	85	105	P	00852737	00852754
100	28	Polyurethane/Polymer	L64720S	Ball	80	135	L64721S	L64722S	95	105	P	00353158	00353175
100	32	White Nylon	L64000W	Plain	90	135	L64001S	L64002S	95	105	P	00857888	00857905
125	30	Polyurethane/Polymer	L65720S	Ball	100	161	L65721S	L65722S	110	110	P	00353209	00353226
125	32	White Nylon	L65000W	Plain	100	161	L65001S	L65002S	110	110	P	00855372	00855389
150	30	Polyurethane/Polymer	L66720S	Ball	100	189	L66721S	L66722S	125	125	P	01062218	01062031

Options

Total lock brake, use suffix L after the swivel model number - ie. L6312SL

Directional Lock, use suffix K after the swivel model number - ie. L64721SK (not available in 75mm diameter)

INSTITUTIONAL BOLT HOLE RANGE WHEEL SPECIFICATIONS

INSTITUTIONAL BOLT HOLE RANGE WHEEL SPECIFICATIONS						CASTOR SPECIFICATIONS							
Dia 'A'	Width 'B'	Wheel Type	Wheel Model No	Bearing	Capacity	Height 'C'	Swivel Model No.	Rigid Model No.	Swept Radius 'D'	'K'	Plate Code	Product Code Swivel	Rigid
75	30	Grey Rubber	L63120S	Ball	55	107	L63123S	-	85	104	12	00677161	-
75	30	White Nylon	L63000W	Plain	80	107	L63003S	-	85	104	12	00852737	-
100	28	Polyurethane/Polymer	L64720S	Ball	80	135	L64723S	-	95	106	12	00353158	-
100	32	White Nylon	L64000W	Plain	90	135	L64003S	-	95	106	12	-	-
125	30	Polyurethane/Polymer	L65720S	Ball	100	161	L65723S	-	110	110	12	00353209	-
125	32	White Nylon	L65000W	Plain	100	161	L65003S	-	110	110	12	-	-
150	30	Polyurethane/Polymer	L66720S	Ball	100	189	L66723S	-	125	125	12	01062218	-

Options

Total Lock brake, use suffix L after the swivel model number - i.e. L63123SL

Directional Lock, use suffix K after the swivel model number - i.e. L65723SK (not available in 75mm diameter)

MEDIUM INDUSTRIAL WHEEL SPECIFICATIONS

MEDIUM INDUSTRIAL WHEEL SPECIFICATIONS						CASTOR SPECIFICATIONS							
Dia 'A'	Width 'B'	Wheel Type	Wheel Model No	Bearing	Capacity	Height 'C'	Swivel Model No.	Rigid Model No.	Swept Radius 'D'	'K'	Plate Code	Product Code Swivel	Rigid
75	30	White Nylon	L3440W	Plain	100	95	L3400S	L3401S	65	N/A	K	09298318	09298415
75	35	White Nylon	L3540W	Plain	110	95	L3500S	L3501S	65	N/A	K	-	-
100	40	Glass Fibre Rein Phenolic 300	L4541EHT	Plain	225	125	L4510SEHT	L4511SEHT	85	N/A	L	01061402	01061011
100	40	Mineral Fibre Rein Phenolic 170 [short duration 210	L4541HT	Plain	225	125	L4510SHT	L4511SHT	85	N/A	L	-	-
100	32	White Nylon	L4441W	Plain	200	125	L4410S	L4411S	85	N/A	L	09298512	09298619
100	38	White Nylon	L4541W	Plain	205	125	L4510S	L4511S	85	N/A	L	-	-
150	40	White Nylon	L6443W		300	184	L6430S	L6431S	115	N/A	M	09298716	09298813
150	40	White Nylon	L6443W	Plain	400	184	L6530S	L6531S	115	N/A	M	-	-

LEMCO

Models and specifications are subject to change without notice, all dimensions are nominal

R.J. Cox Engineering
(02) 9486-3006

www.coxengineering.com.au
info@coxengineering.com.au

