



Load Capacities up to 700kg

- Cold formed and fabricated steel frames provide strength and durability
- Swivel castors have a double ballrace to reduce wear
- Standard plug or socket fittings are sized to fit most commonly used scaffold tubing
- Ballraces are sealed to reduce dust penetration
- Design meets standards AS 157612 and BSS 1139.
- Brake pedal is fully replaceable
- Australian Made
- 12 month warranty

Users include: OE Manufacturers, Building and Maintenance Contractors, Hire Companies

Lemcol scaffold castors are manufactured to comply with international and Australian standards. Plug or socket fittings are sized to fit most commonly used aluminium and galvanised steel scaffold tubing.

The loads referred to in this range are based on such loads being applied on the castors when stationary on even and level surfaces (Static Load).

Frames

The scaffold range utilises both the Series 8 and Series 7 Industrial range. Both series are cold formed and fabricated to provide strength and reliability - a feature of the Lemcol brand.

Swivel races are sealed against dust to minimise maintenance requirements.

Castors are fitted with a foot-operated total lock brake for maximum safety and convenience. This is a standard feature on all Lemcol scaffold castors, which complies with the requirements of AS 157612, BSS 1139 and in some cases DIN 4422 also applies. The brake design allows for the high impact nylon pedal to be easily replaced if necessary.

Wheels

Sizes range from 125mm to 200 mm with tyres ranging from polyurethane and rubber moulded onto cast iron centres, and nylon.

Wheels are supplied with a roller bearing, which is a popular low cost easy movement bearing. This bearing is widely used to reduce the manual effort to move heavy loads.

A grease nipple or greasable axle is fitted for maintenance purposes to extend the working life.

12 Month Warranty

This range carries our standard 12 month warranty against faulty workmanship and materials, and is backed by a service and parts network Australia wide.

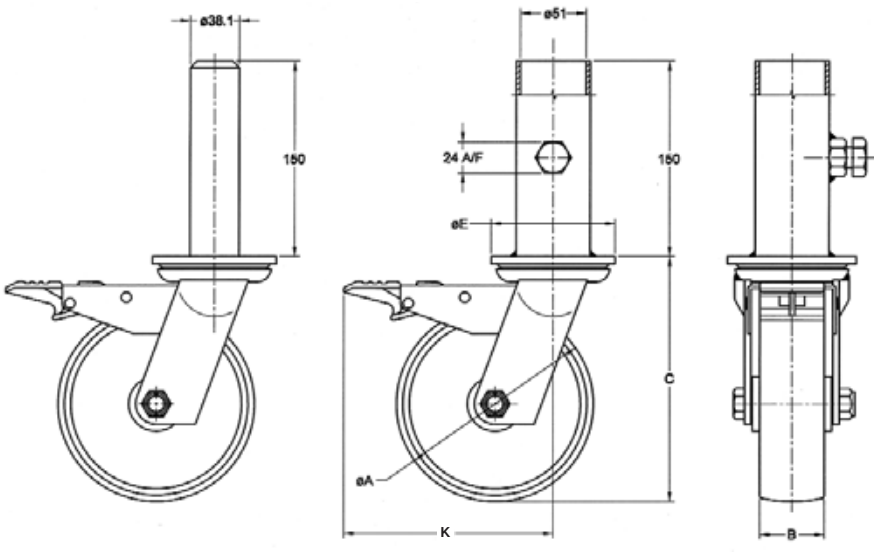


scaffold

CASTORS

WHEEL SPECIFICATIONS						CASTOR SPECIFICATIONS						
Dia 'A'	Width 'B'	Wheel Type	Wheel Model No.	Bearing	Capacity Static Load	Height 'C'	Socket Fitting	Plug Fitting	Swept Radius 'D'	Swept Radius 'K'	Product Code Swivel	Product Code Rigid
125	50	Nylon	L75010	Roller	400	163	L85011L-SS	L85011L-SP	-	152	-	-
125	50	Poly on Cast Iron	L85410	Roller	360	163	L85411L-SS	L85411L-SP	-	152	-	-
125	50	Rubber on Cast Iron	L85210	Roller	180	163	L85211L-SS	L85211L-SP	-	152	-	-
125	50	Nylon	L75010	Roller	450	168	L75011L-SS	L75011L-SP	-	152	-	-
125	50	Poly on Cast Iron	L75410	Roller	500	168	L75411L-SS	L75411L-SP	-	152	-	-
125	50	Rubber on Cast Iron	L75210	Roller	240	168	L75211L-SS	L75211L-SP	-	152	-	-
150	50	Nylon	L76010	Roller	400	188	L86011L-SS	L86011L-SP	-	162	-	-
150	50	Poly on Cast Iron	L86410	Roller	400	188	L86411L-SS	L86411L-SP	-	162	-	-
150	50	Rubber on Cast Iron	L86210	Roller	200	188	L86211L-SS	L86211L-SP	-	162	-	-
150	50	Nylon	L76010	Roller	600	194	L76011L-SS	L76011L-SP	-	162	-	-
150	50	Poly on Cast Iron	L76410	Roller	600	194	L76411L-SS	L76411L-SP	-	162	-	-
150	50	Rubber on Cast Iron	L76210	Roller	300	194	L76211L-SS	L76211L-SP	-	162	-	-
200	50	Nylon	L78010	Roller	400	238	L88011L-SS	L88011L-SP	-	179	-	-
200	50	Poly on Cast Iron	L88410	Roller	500	238	L88411L-SS	L88411L-SP	-	179	-	-
200	50	Rubber on Cast Iron	L88210	Roller	220	238	L88211L-SS	L88211L-SP	-	179	-	-
200	50	Nylon	L78010	Roller	700	254	L78011L-SS	L78011L-SP	-	179	-	-
200	50	Poly on Cast Iron	L78410	Roller	700	254	L78411L-SS	L78411L-SP	-	179	-	-
200	50	Rubber on Cast Iron	L78210	Roller	400	254	L78211L-SS	L78211L-SP	-	179	-	-

TECHNICAL SPECIFICATIONS



Models and specifications are subject to change without notice, all dimensions are nominal

R.J. Cox Engineering
(02) 9486-3006

www.coxengineering.com.au
info@coxengineering.com.au

