



Load Capacities up to 125kg

- Pressed metal, double ballrace frames provide strength and durability
- Standard zinc plated or chrome plated finish available on all frames
- Swivel, fixed and bolt hole castors are available to suit wheel diameters from 75mm to 150mm
- Expanding, solid and threaded pintles are available for bolt hole castors
- Total lock brakes (suffix L) and directional Lock (suffix K) available on most swivel castors.
- Large selection of wheels to suit various operating environments
- 12 month warranty

Users include: Hospitals, Laboratories, Caterers, Offices, Fabricators and Furniture manufacturers

Manufactured to world standards, the strong metal construction ensures longer life and less operational down-time.

Frames

Pressed metal construction utilising a double ballrace to reduce wear. The main swivel race is sealed against dust to maximise the working life of the castor.

The standard finish is bright zinc plating. Frames are also available chrome plated where general appearance is a strong consideration.

Each size is available in swivel and fixed plates, and bolthole. For bolthole frames, expanding pintles, solid pintles and threaded pintles are available to suit various fixing requirements. Solid pintles should be used where a more rigid mounting is required, such as hospital beds. A simple side-mounted locking screw enables quick replacement if necessary. Threaded pintles with a 1/2 inch UNF thread are used in specialised equipment where a pre-tapped hole is the only means of fixing.

Total brakes are available across the whole range. Two-way directional locks are available on all models except 75mm, enabling the trolley to be used in fixed or swivel mode according to whether greater manoeuvrability or stable, straight tracking is needed.

Wheels

Diameters range from 75mm to 150mm with load capacities up to 125kg. Wheel materials include polyurethane, nylon, blue rubber and grey rubber. To prevent linen thread from being trapped around the wheel axles, thread guards are fitted as standard on all models except nylon. Mixes of bearing types are available to suit various applications.

12 Month Warranty

This range carries our standard 12 month warranty against faulty workmanship and materials, and is backed by a service and parts network Australia wide.

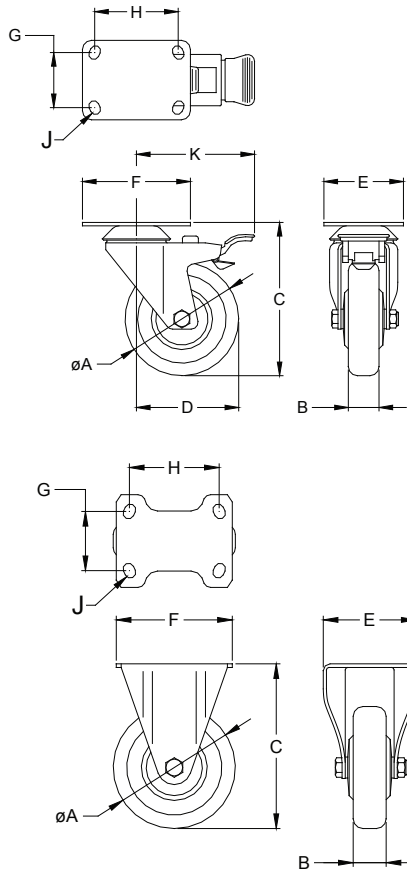
® R.J. Cox Engineering
(02) 9486-3006

www.coxengineering.com.au
info@coxengineering.com.au



institutional CASTORS

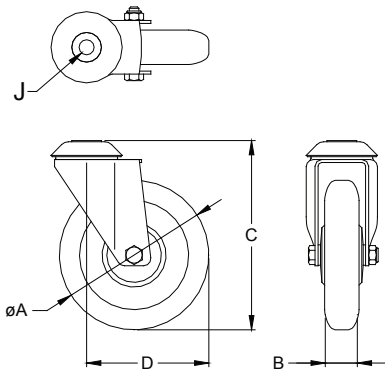
TECHNICAL SPECIFICATIONS



Top Plate Sizes and Bolt Hole Dimensions

All dimensions in millimetres

Plate Code	E x F	G x H	J
P	70 x 95	45/52 x 72/75	8



Expanding Pintles Solid Pintles Threaded Pintles

Round	Square	Size Range	Round Dia. (mm)	Thread
R1	S1	18.5-21.0	P2 22	T2 1/2" UNF x 27mm
R2	S2	21.5-24.0	P3 28	T6 M12 x 45mm
R3	S3	27.5 - 30.0		T9 M12 x 75mm

Note: When ordering castors with pintle, add the suffix to the model number - i.e. L66123LS2

WHEEL SPECIFICATIONS

Dia 'A'	Width 'B'	Wheel Type	Wheel Model No	Bearing	Capacity	Height 'C'	Swivel Model	Rigid Model	'D'	'K'	Plate Code	Product Code Swivel	Product Code Rigid
75	30	Grey Rubber	L63120	Ball	55	107	L63121	L63122	85	105	P	00677161	00717009
75	30	Black Nylon	L63000	Plain	80	107	L63001	L63002	85	105	P	00852737	00852754
75	30	Polyurethane	L63720	Ball	60	107	L63721	L63722	85	105	P	01062864	01062575
100	32	Black Nylon	L64000	Plain	90	135	L64001	L64002	95	105	P	00857888	00857905
100	32	Black Nylon	L64010	Roller	100	135	L64011	L64012	95	105	P	-	-
100	32	Blue Rubber	L64810	Roller	80	135	L64811	L64812	95	105	P	00353260	00353277
100	32	Grey Rubber	L64120	Ball	80	135	L64121	L64122	95	105	P	00353005	00353022
100	28	Polyurethane	L64720	Ball	80	135	L64721	L64722	95	105	P	00353158	00353175
125	32	Black Nylon	L65000	Plain	100	161	L65001	L65002	110	110	P	00855372	00855389
125	32	Black Nylon	L65010	Roller	125	161	L65011	L65012	110	110	P	-	-
125	32	Blue Rubber	L65810	Roller	100	161	L65811	L65812	110	110	P	00353311	00353328
125	32	Grey Rubber	L65120	Ball	100	161	L65121	L65122	110	110	P	00353056	00363073
125	30	Polyurethane	L65720	Ball	100	161	L65721	L65722	110	110	P	00353209	00353226
150	32	Grey Rubber	L66120	Ball	100	189	L66121	L66122	125	125	P	00353107	00353124
150	30	Polyurethane	L66720	Ball	100	189	L66721	L66722	125	125	P	01062218	01062031

Options

Total Lock brake, use suffix L after the swivel model number - i.e. L63121L

Directional Lock, use suffix K after the swivel model number - i.e. L64811K (not available in 75mm diameter)

BOLT HOLE RANGE WHEEL SPECIFICATIONS

Dia 'A'	Width 'B'	Wheel Type	Wheel Model No	Bearing	Capacity	Height 'C'	Swivel Model	Rigid Model	'D'	'K'	Hole Dia	Product Code Swivel	Product Code Rigid
75	30	Grey Rubber	L63120	Ball	55	107	L63123	-	85	104	12	01066060	-
75	30	Polyurethane	L63720	Ball	60	107	L63723	-	85	104	12	01062490	-
75	30	Black Nylon	L63000	Plain	80	107	L63003	-	85	104	12	00991668	-
100	32	Blue Rubber	L64810	Roller	80	135	L64813	-	95	105	12	00353294	-
100	32	Grey Rubber	L64120	Ball	80	135	L64123	-	95	105	12	00353039	-
100	28	Polyurethane	L64720	Ball	80	135	L64723	-	95	105	12	00353192	-
100	32	Black Nylon	L64000	Plain	90	135	L64003	-	95	105	12	-	-
100	32	Black Nylon	L64010	Roller	100	135	L64013	-	95	105	12	-	-
125	32	Blue Rubber	L65810	Roller	100	161	L65813	-	110	106	12	00353345	-
125	32	Grey Rubber	L65120	Ball	100	161	L65123	-	110	106	12	00353090	-
125	30	Polyurethane	L65720	Ball	100	161	L65723	-	110	106	12	00353243	-
125	32	Black Nylon	L65000	Plain	100	161	L65003	-	110	106	12	-	-
125	32	Black Nylon	L65010	Roller	125	161	L65013	-	110	106	12	-	-
150	32	Grey Rubber	L66120	Ball	100	189	L66123	-	125	125	12	00353141	-
150	30	Polyurethane	L66720	Ball	100	189	L66723	-	125	125	12	01061980	-

Options

Total Lock brake, use suffix L after the swivel model number - i.e. L63723L

Directional Lock, use suffix K after the swivel model number - i.e. L64003K (not available in 75mm diameter)



Models and specifications are subject to change without notice, all dimensions are nominal

R.J. Cox Engineering
(02) 9486-3006

www.coxengineering.com.au
info@coxengineering.com.au

