



### Load Capacities up to 2,000kg

- Fully welded heavy steel frames provide optimum strength and durability
- Swivel castors have a precision machined deep grooved ballrace
- Top plates conform to AS B282
- Grease nipples are fitted in the swivel race
- Bearings are sealed to accommodate severe operating conditions
- Large selection of wheels from 200mm to 250mm diameter
- Australian made
- 12 month warranty

### Users include: Major Industry, Manufacturers, Workshops and Factories

Designed to meet extremely high loads, this range will provide reliable service where shock or impact might damage less rugged castors.

### Frames

Heavy steel sections are welded together to provide high strength and durability. This is complimented by a precision machined, deep grooved swivel race, ensuring a smooth action even under capacity loads. The ballrace is also sealed to prevent foreign material entering, minimising the possibility of costly maintenance requirements.

The fitment of a grease nipple is standard and when maintained correctly, provides a castor of long operational life.

Top plates are made to a widely adopted standard to comply with Australian Standard AS B282, maximising compatibility and ease of replacement or upgrading in the future.

### Wheels

High load capacities are achieved by offering a wheel selection to compliment the rugged frame construction. Black rubber, cast iron and polyurethane wheels are offered from 200mm to 250 mm diameters.

Cushion tyred and pneumatic wheels are recommended where surface conditions or equipment carried requires some degree of impact absorption.

Special purpose wheels can be engineered such as our 200mm soft polyurethane, used in the Automotive industry.

Wheels in this range are fitted with sealed deep-groove precision bearings for a long maintenance free life and low rolling resistance.

### 12 Month Warranty

This range carries our standard 12 month warranty against faulty workmanship and materials, and is backed by a service and parts network Australia wide.

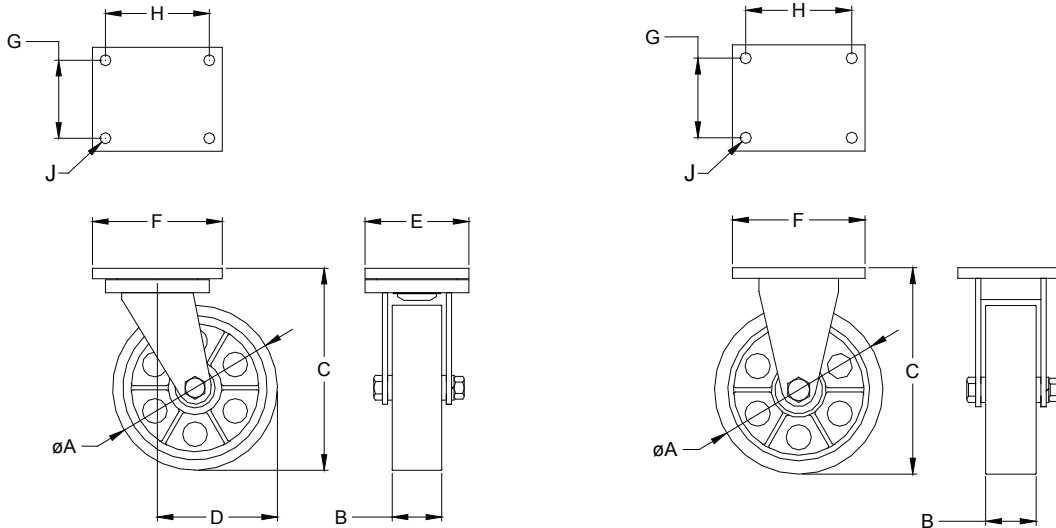


# industrial-extra heavy

# CASTORS

WHEEL SPECIFICATIONS						CASTOR SPECIFICATIONS							
Dia 'A'	Width 'B'	Wheel Type	Wheel Model No	Bearing	Capacity	Height 'C'	Swivel Model No.	Rigid Model No.	Swept Radius 'D'	'K'	Plate Code	Product Code Swivel	Product Code Rigid
200	65	Black Rubber	L732	Prec Ball	500	260	L590	L591	155	N/A	B	04792903	04793009
200	75	Black Rubber	L854	Prec Ball	600/380	260	L590MR	L591MR	160	N/A	B	00601222	01068508
200	75	Cast Iron	L677	Prec Ball	1200	260	L592	L593	160	N/A	B	04793106	04793203
200	75	Polyurethane/Cast Iron	L854PU	Prec Ball	1200/800	260	L590PU	L591PU	160	N/A	B	01068695	01068406
200	75	Polyurethane/Cast Iron	L856PU	Prec Ball	2000/1200	260	L590PU-2	L591PU-2	160	N/A	B	-	-
200	75	Polyurethane/Cast Iron	L854PU-80A	Prec Ball	650/400	260	L590PU-80A	L591PU-80A	160	N/A	B	-	-
250	65	Black Rubber	L737	Prec Ball	600	310	L595	L596	185	N/A	B	04793300	04793407
250	75	Black Rubber	L861	Prec Ball	700/450	310	L595MR	L596MR	190	N/A	B	01068372	01068304
250	75	Cast Iron	L682	Prec Ball	1200	310	L597	L598	190	N/A	B	04793504	04793601
250	75	Polyurethane/Cast Iron	L861PU	Prec Ball	1400/900	310	L595PU	L596PU	190	N/A	B	00165240	00165257
250	75	Polyurethane/Cast Iron	L864PU	Prec Ball	2000/1200	310	L595PU-2	L596PU-2	190	N/A	B	-	-
40	100	Pneumatic	L790	Ball	270	467	L552	L553	370	N/A	B	04972804	02462255
400	75	Semi Pneumatic	L771	Ball	280	470	L460	L461	370	N/A	B	01063986	01063952

## TECHNICAL SPECIFICATIONS



### Top Plate Sizes and Bolt Hole Dimensions

All dimensions in millimetres

Plate Code	E x F	G x H	J
B	130 x 254	89 x 216	12



Models and specifications are subject to change without notice, all dimensions are nominal

® R.J. Cox Engineering  
(02) 9486-3006

[www.coxengineering.com.au](http://www.coxengineering.com.au)  
[info@coxengineering.com.au](mailto:info@coxengineering.com.au)

