

### Load Capacities up to 1,000kg

- Fully fabricated steel frames provide optimum strength and durability
- Swivel castors have a precision machined deep grooved, sealed ballrace
- Top plates conform to AS B282
- Large selection of wheel types to suit most operating environments, 100mm to 200mm diameter
- Sealed precision ball bearings are used to reduce maintenance costs and provide low rolling resistance
- Wheel brakes (suffix H) are available on most swivel castors
- Australian made
- 12 month warranty

### Users include: Major Industry, Manufacturers, Workshops, Factories and Warehouses

The flagship of the Lemcol range, the Heavy Industrial castor has a time-proven record of solid performance.

Quality, ruggedness and reliability are the result of superior castor design and in-house manufacturing techniques.

### Frames

Manufactured from heavy steel sections, frame components are robot welded to provide strength and durability even under adverse conditions. The rigid castor leg is formed to give extra sideways strength.

Other features include precision-machined deep grooved swivel races, sealed for life to minimise maintenance requirements.

Top plates are made to a widely adopted standard to comply with Australian Standard AS B282, maximising compatibility and ease of replacement or upgrading in the future.

Most swivel castors are available with an over the wheel brake. The brake design allows for the high impact nylon pedal to be easily replaced if necessary.

### Wheels

Wheel types are offered to suit most operating environments - nylon, rubber and polyurethane, most moulded to cast iron centres. Cast iron and S.G. Iron are also available for use where ground conditions will damage tyred wheels.

S.G. Iron wheels are less brittle than cast iron, resisting cracking and breaking under high impact.

Where tyre wear is a concern, we offer nylon, rubber and polyurethane wheels with demountable tyres. This allows the user to economically replace the tyre only, not the entire wheel.

Most wheels in this range are fitted with sealed precision ball bearings for a long maintenance free life and low rolling resistance. Diameters range from 100mm to 200mm.

### 12 Month Warranty

This range carries our standard 12 month warranty against faulty workmanship and materials, and is backed by a service and parts network Australia wide.



# industrial-heavy CASTORS

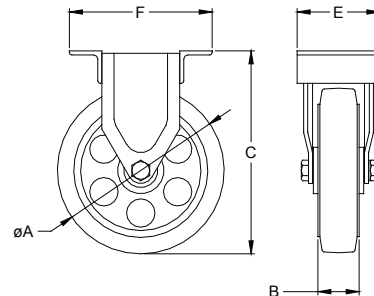
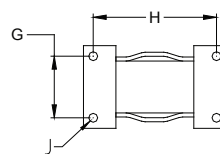
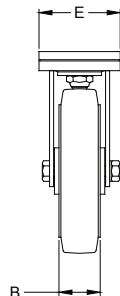
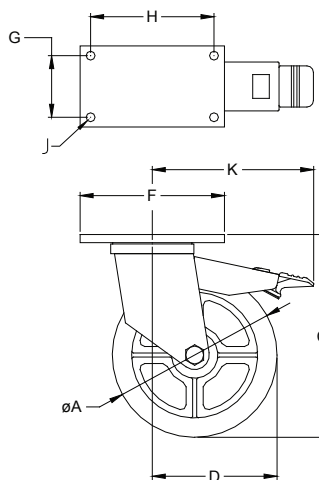
WHEEL SPECIFICATIONS						CASTOR SPECIFICATIONS								
Dia 'A'	Width 'B'	Wheel Type	Wheel Model No	Bearing	Capacity	Height 'C'	Swivel Model	Rigid Model	Swept Radius 'D'	K'	Plate Code	Product Code		
												Swivel	Rigid	
100	40	Black Nylon	L708	Prec Ball	230	140	L557	L558	95	162	A	04908205	04791409	
100	40	Black Rubber	L835	Prec Ball	225	140	L559	L560	95	162	A	04795104	04795201	
100	45	Cast Iron	L614	Prec Ball	400	140	L561	L562	95	162	A	04791506	04791603	
100	40	Polyurethane/Cast Iron	L835PU	Prec Ball	400	140	L559PU	L560PU	95	162	A	00604894	00164662	
125	40	Black Nylon	L709	Prec Ball	340	165	L565	L566	110	174	A	04908302	04791807	
125	45	Black Rubber	L837	Prec Ball	300	165	L567	L568	110	174	A	04795308	04795405	
125	50	Lemcolite	L5542L	Acetal	300	165	L567L	L568L	110	174	A	-	-	
125	45	Polyurethane/Cast Iron	L837PU	Prec Ball	500	165	L567PU	L568PU	110	174	A	02316165	02316068	
150	48	Black Nylon	L717	Prec Ball	455	190	L573	L574	125	183	A	04793708	04793805	
150	50	Black Rubber	L6543	Acetal	180	190	L534PR	L535PR	125	183	A	-	-	
150	48	Black Rubber	L716	Prec Ball	200	190	L575	L576	125	183	A	04791904	04792000	
150	50	Black Rubber	L841	Prec Ball	380	190	L534	L535	125	183	A	04794707	04794804	
150	75	Black Rubber	L850	Prec Ball	500	190	L580	L581	130	183	A	04795502	04795609	
150	45	Cast Iron	L661	Prec Ball	600	190	L577	L578	125	183	A	04792107	04792204	
150	75	Cast Iron	L665	Prec Ball	700	190	L580CI	L581CI	130	183	A	-	-	
150	50	Lemcolite	L6543L	Acetal	360	190	L534L	L535L	125	183	A	00481780	00481797	
150	48	Polyurethane/Cast Iron	L716PU	Prec Ball	300	190	L575PU	L576PU	125	183	A	-	-	
150	50	Polyurethane/Cast Iron	L841PU	Prec Ball	680	190	L534PU	L535PU	125	183	A	05216019	05216213	
150	75	Polyurethane/Cast Iron	L850PU	Prec Ball	850	190	L580PU	L581PU	130	183	A	01058121	01058274	
150	45	SG Iron	L696	Prec Ball	1000	190	L906	L907	125	183	A	01058903	01058784	
200	48	Black Nylon	L727	Prec Ball	455	250	L588	L589	155	200	A	04793902	01160907	
200	48	Black Rubber	L726	Prec Ball	250	250	L582	L583	155	200	A	04792301	04792408	
200	50	Black Rubber	L844	Prec Ball	500/240	250	L536	L537	155	200	A	04794901	04988801	
200	57	Cast Iron	L671	Prec Ball	700	250	L584	L585	155	200	A	04792505	04792602	
200	50	Polyurethane/Cast Iron	L88430-80A	Prec Ball	400	250	L548PU	L549PU	155	200	A	-	-	
200	48	Polyurethane/Cast Iron	L726PU	Prec Ball	400	250	L582PU	L583PU	155	200	A	-	-	
200	50	Polyurethane/Cast Iron	L844PU	Prec Ball	1000	250	L536PU	L537PU	155	200	A	05217610	05218017	
200	45	SG Iron	L698	Prec Ball	1000	250	L908	L909	155	200	A	01068219	01068270	

## Options

Wheel brake, use suffix -H after the swivel model number - i.e. L536-H (not available on Cast or SG Iron wheels)

Note - \* denotes demountable tyre

## TECHNICAL SPECIFICATIONS



## Top Plate Sizes and Bolt Hole Dimensions

All dimensions in millimetres

Plate Code	E x F	G x H	J
* A	100 x 178	76 x 152	10

R.J. Cox Engineering  
(02) 9486-3006



Models and specifications are subject to change without notice, all dimensions are nominal

www.coxengineering.com.au  
info@coxengineering.com.au

