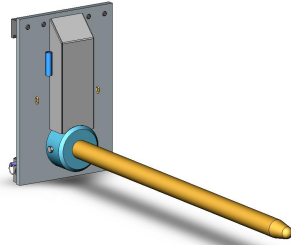
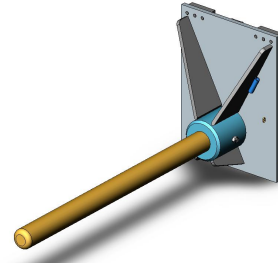


Type RPC-QR2/3 Carriage Mounted Roll Prong Load Chart

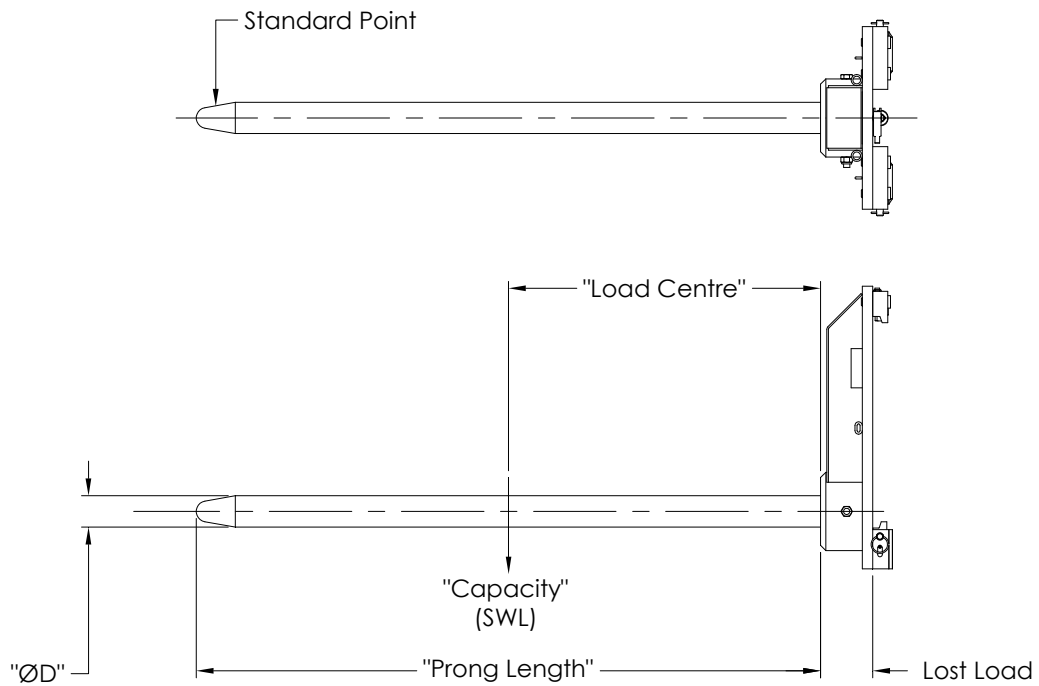
The following Load Chart details the "Capacities" (Safe Working Loads) for Roll Prong diameters from 40-100mm at various Load Centres for the type RPC-QR2 and RPC-QR3 Carriage Mounted Roll Prong models. For complete Roll Prong Specifications, please refer to the relevant type Roll Prong "Drawing and Specifications" sales sheet PDF files on the East West Engineering Website at "www.eastwesteng.com.au".



RPC-QR2



RPC-QR3



SLIP-ON Type/Load Centre	"ØD" mm	"Capacity" (kg) at "Load Centre"														Basic Wgt		
		600	700	800	900	1000	1200	1400	1500	1600	1800	2000	2500	3000	1200mm kg	100mm kg		
RPC - QR2 - 40 - XXXX	40	200	150	100	60												63	1
RPC - QR2 - 50 - XXXX	50	400	350	300	250	200	100	50									70	1.5
RPC - QR2 - 60 - XXXX	60	800	700	600	530	480	400	340	320	300	265						77	2.2
RPC - QR2 - 70 - XXXX	70	1200	1050	900	800	720	600	510	480	450	400	360					87	3
RPC - QR2 - 80 - XXXX	80	2000	1750	1500	1350	1200	1000	850	800	750	665	600	440				100	4.2
RPC - QR3 - 70 - XXXX	70	1200	1050	900	800	720	600	510	480	450	400	360					142	3
RPC - QR3 - 80 - XXXX	80	2000	1750	1500	1350	1200	1000	850	800	750	665	600	440				154	4.2
RPC - QR3 - 90 - XXXX	90	3000	2570	2250	2000	1800	1500	1285	1200	1125	980	865	650	495			170	5
RPC - QR3 - 100 - XXXX	100	4000	3500	3000	2700	2400	2000	1700	1600	1500	1330	1200	910	700			184	6.2

The "Prong Length" should be approximately 75% of the Roll length.
 The Basic Weight is calculated with a "Prong Length" of 1200mm.